

# f FROCA



Eco  
COLLECTION



Tela fabricada a partir de botellas de plástico reciclado.  
Fabric made from recycled plastic bottles.



## TU MASCOTA LO MERECE · YOUR PET DESERVES IT

Con tejidos que ofrecen mayor resistencia, higiene y fácil mantenimiento.  
With fabrics that offer greater resistance, hygiene and easy maintenance.



## POR UN MUNDO MEJOR · FOR A BETTER WORLD

100% Fabricado a partir de botellas de plástico reciclado.  
100 % Produced from recycled plastic bottles.



## SOLO CON AGUA · JUST WITH WATER

Fabricado con tecnología que permite su limpieza solo con agua.  
Manufactured with technology that allows cleaning only with water.

JUST  
With  
WATER





SUSTAINABLE FABRICS

### 1. BOTELLAS DE PLASTICO PET

El primer paso es recoger y lavar las botellas de PET.

### 1. PET PLASTIC BOTTLES

The first step is to collect and wash the PET bottles.

### 2. BOTELLAS Y TAPONES

Despojados de sus etiquetas y tapones, se trituran en pedazos.

### 2. BOTTLE SCRAPS

Stripped of their labels and caps, they are crushed to pieces.

### 3. VIRUTAS

Las sobras se cortan en hojuelas, se derriten y se convierten en virutas.

### 3. CHIPS

The scraps are chopped into flakes, melted and made into chips.

### 4. FIBRA

Las virutas se funden y se extruyen en fibras.

### 4. FIBER

The chips are melted and extruded into fibers.

### 5. FIBRA PROCESADA

Las fibras están rizadas, cortadas, estiradas y estiradas.

### 5. PROCESSED FIBER

The fibers are crimped, cut, drawn and stretched.

### 6. TELAS

Las telas están hechas de fibras procesadas.

### 6. FABRICS

Textile fabrics are made from the processed fibers.



# FROCA

# FROCA



VIETNAM 7



CAMBOYA 8



TAIPEI 5



TAIPEI 4



CAMBOYA 7



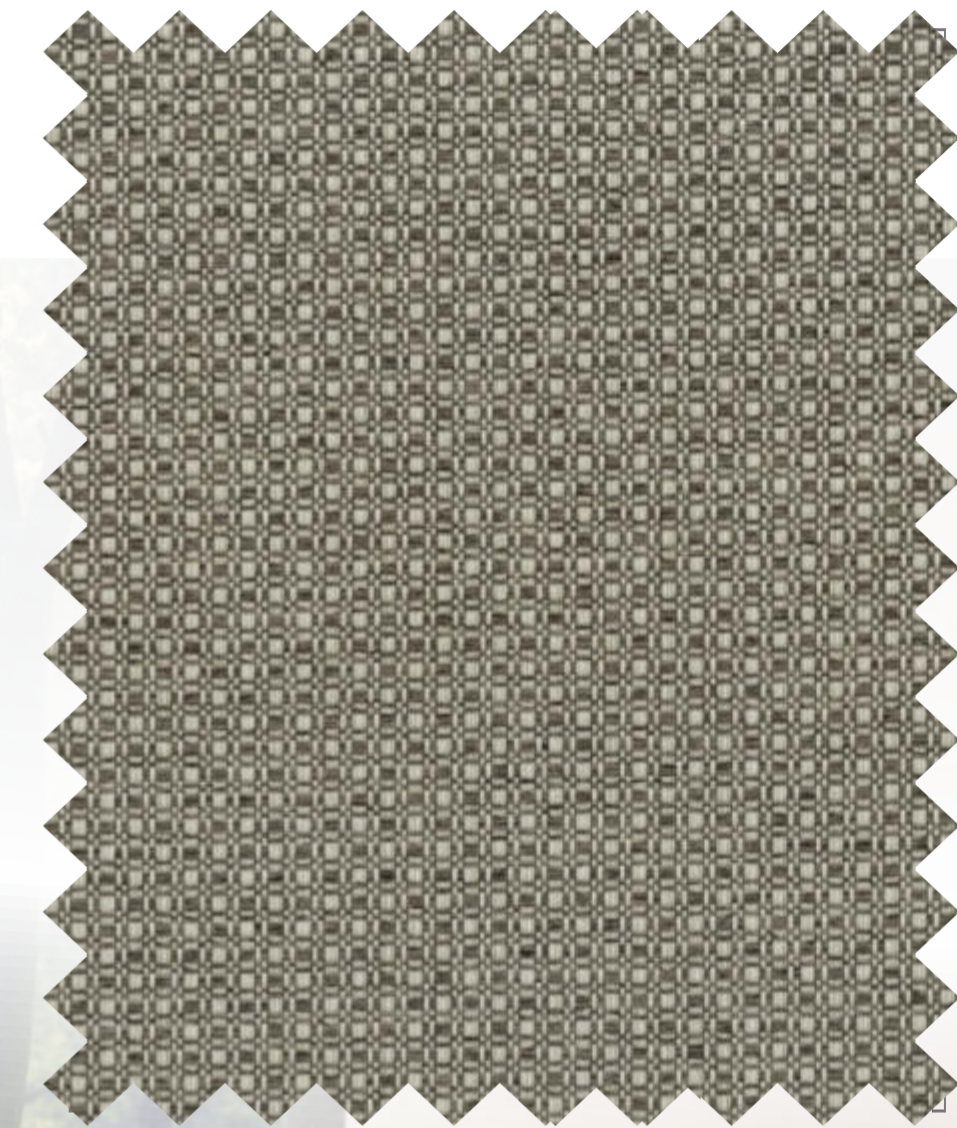
BUTAN 7



ATLAS 11



VIETNAM 8



BUTAN 8



MACAO 7



LAOS 7



LAOS 8



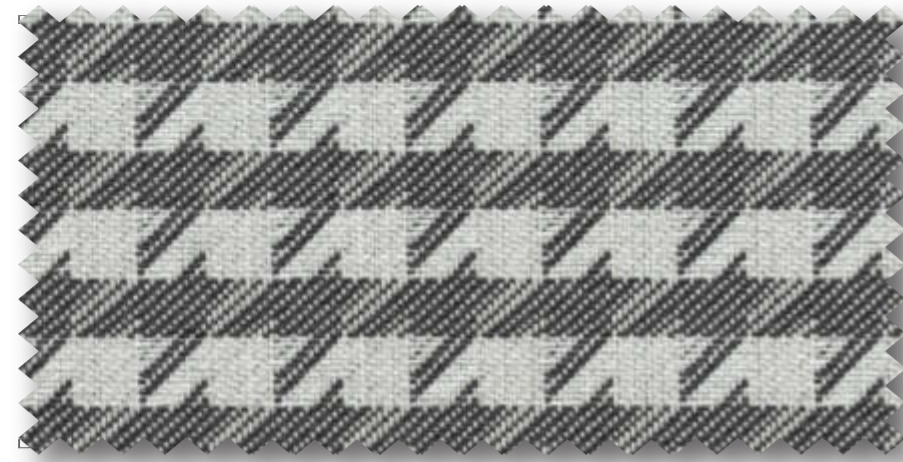
YACARTA 10



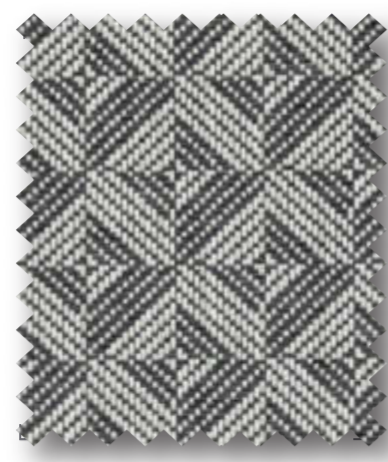
ATLAS 10

YACARTA 9

MACAO 8



CAMBOYA 3 




MACAO 3 




TAIPEI 8 

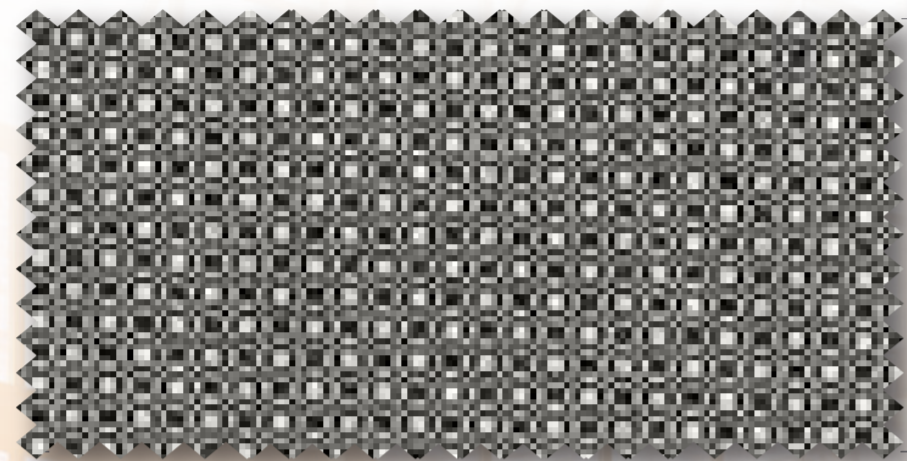



VIETNAM 3 

FROCA



TAIPEI 7 



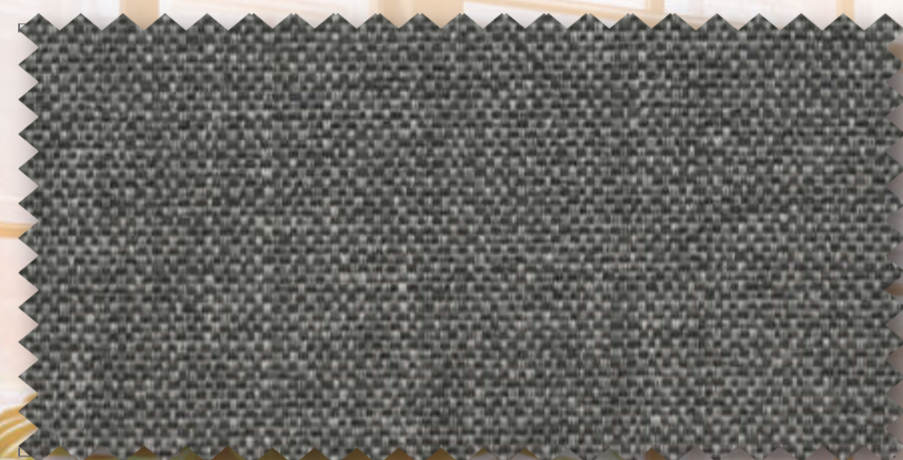
BUTAN 3 



ATLAS 14   



LAOS 3 



YACARTA 4  



Certified by AITEX Certificate N. 2020TE0116





ATLAS 15   




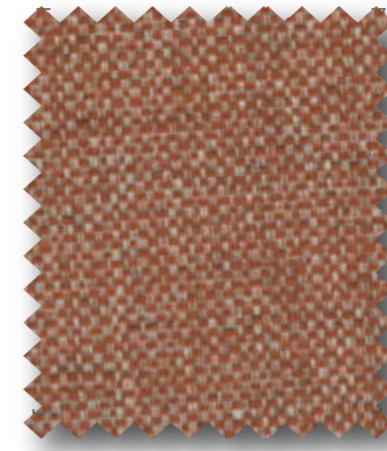
BUTAN 11 



TAIPEI 19 



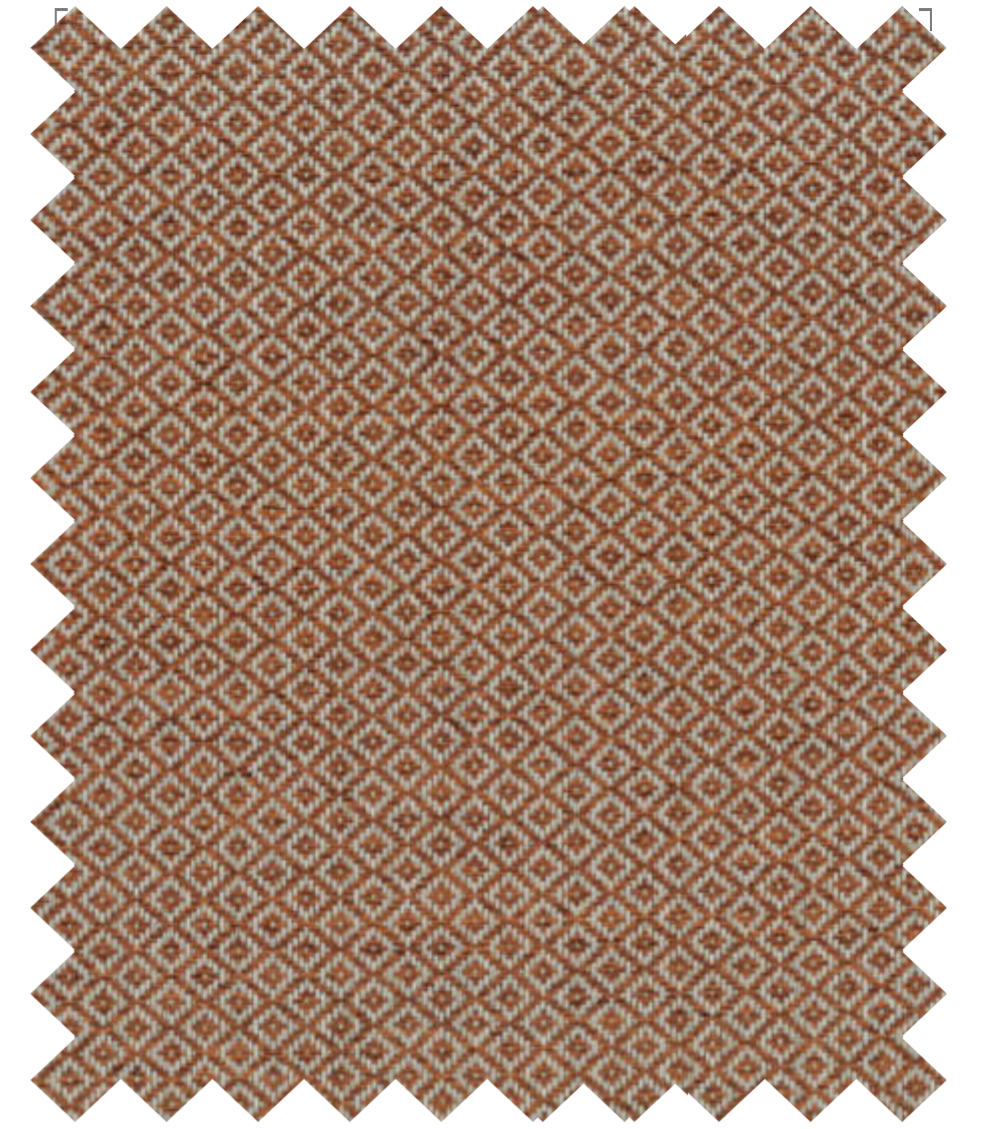
LAOS 11 



YACARTA 13  



ATLAS 18   



LAOS 10 



VIETNAM 11 

YACARTA 14  



TAIPEI 11 



MACAO 10 

**FROCA**



CAMBOYA 11 



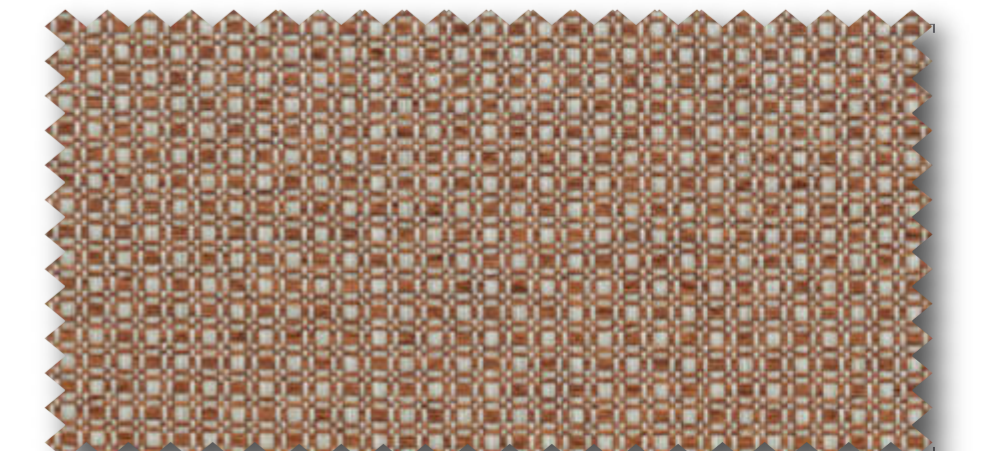
MACAO 11 



VIETNAM 10 



CAMBOYA 10 



BUTAN 10 



ATLAS 29   



ATLAS 11   



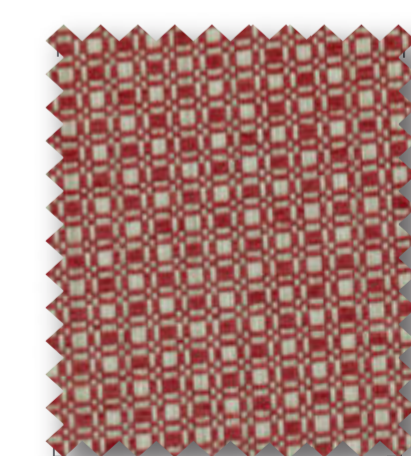
ATLAS 10   



MACAO 9 



LAOS 9 



BUTAN 9 



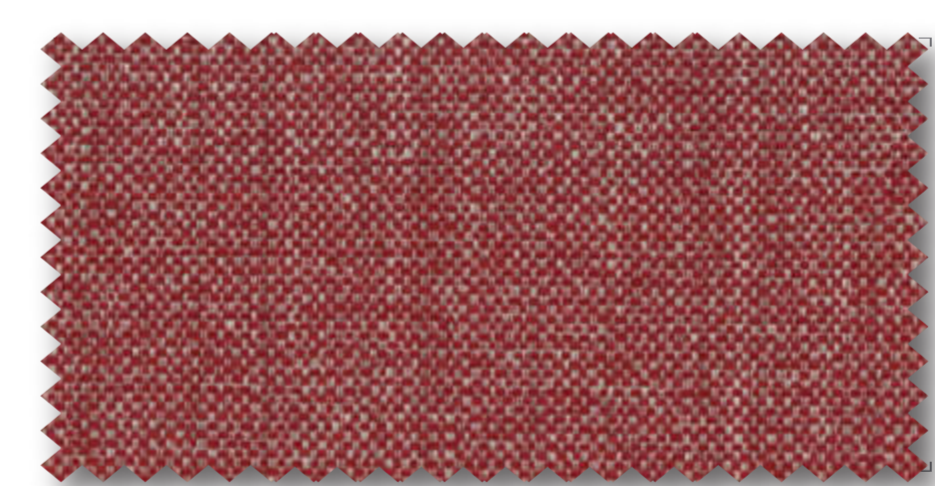
ATLAS 19   



TAIPEI 12 



VIETNAM 9 



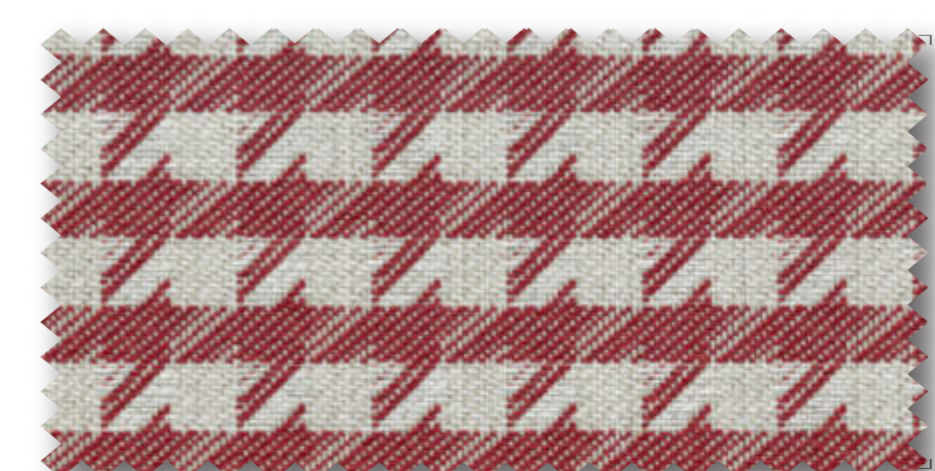
YACARTA 16  



TAIPEI 4 



TAIPEI 8 

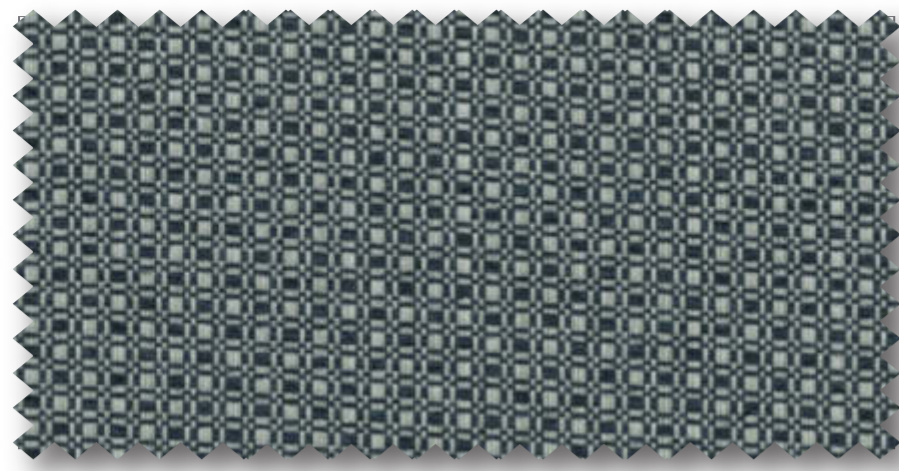


CAMBOYA 9 

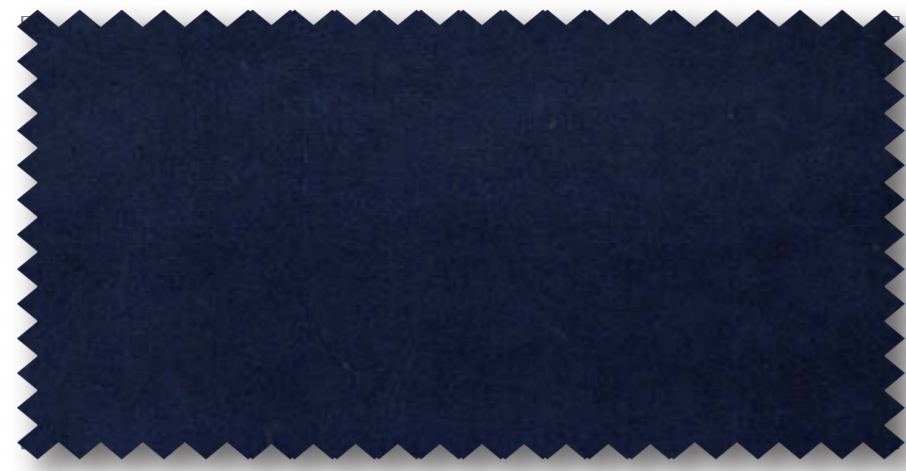
**FROCA**



Certified by AITEX  
Certificate N. 2020TE0116



BUTAN 5 



ATLAS 7   



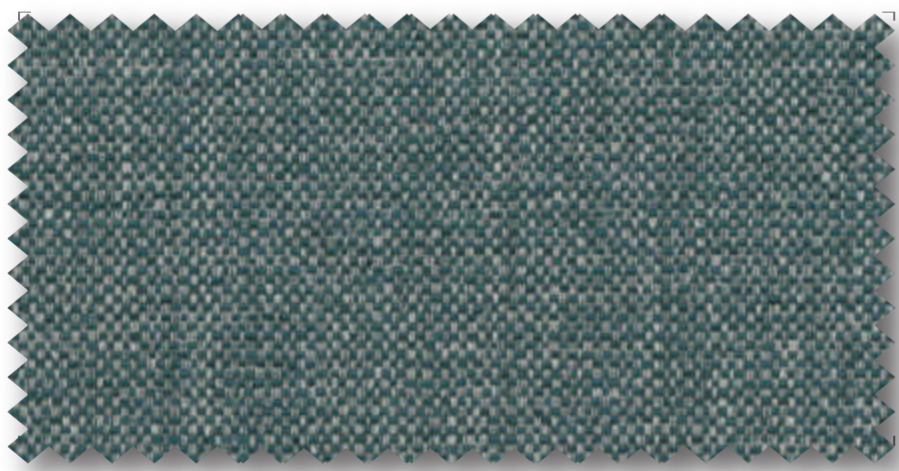
ATLAS 12   



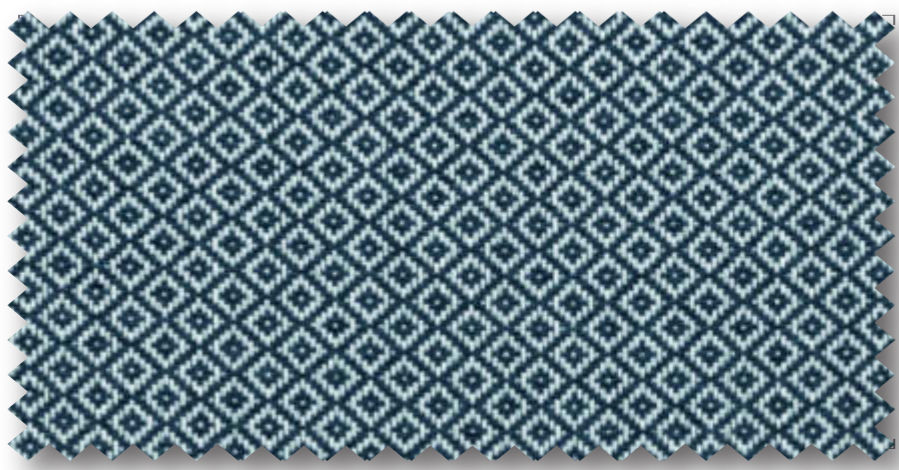
MACAO 5 



TAIPEI 14 



YACARTA 18  



LAOS 5 



**FROCA**



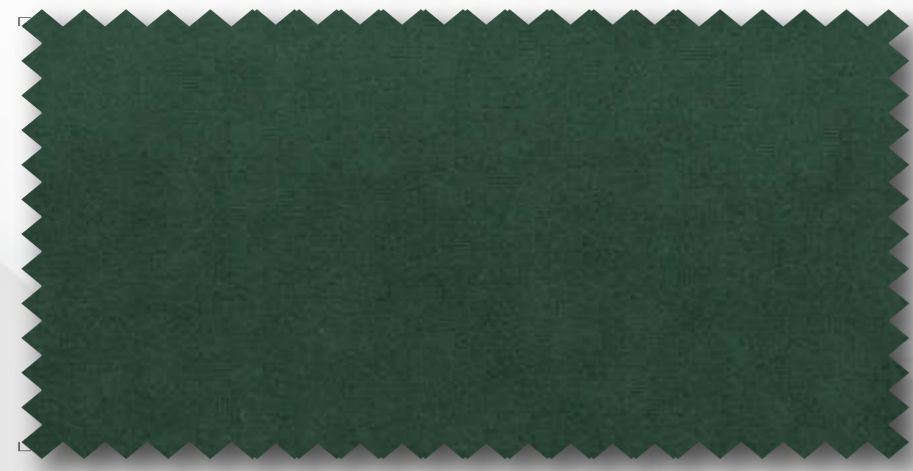
CAMBOYA 5 



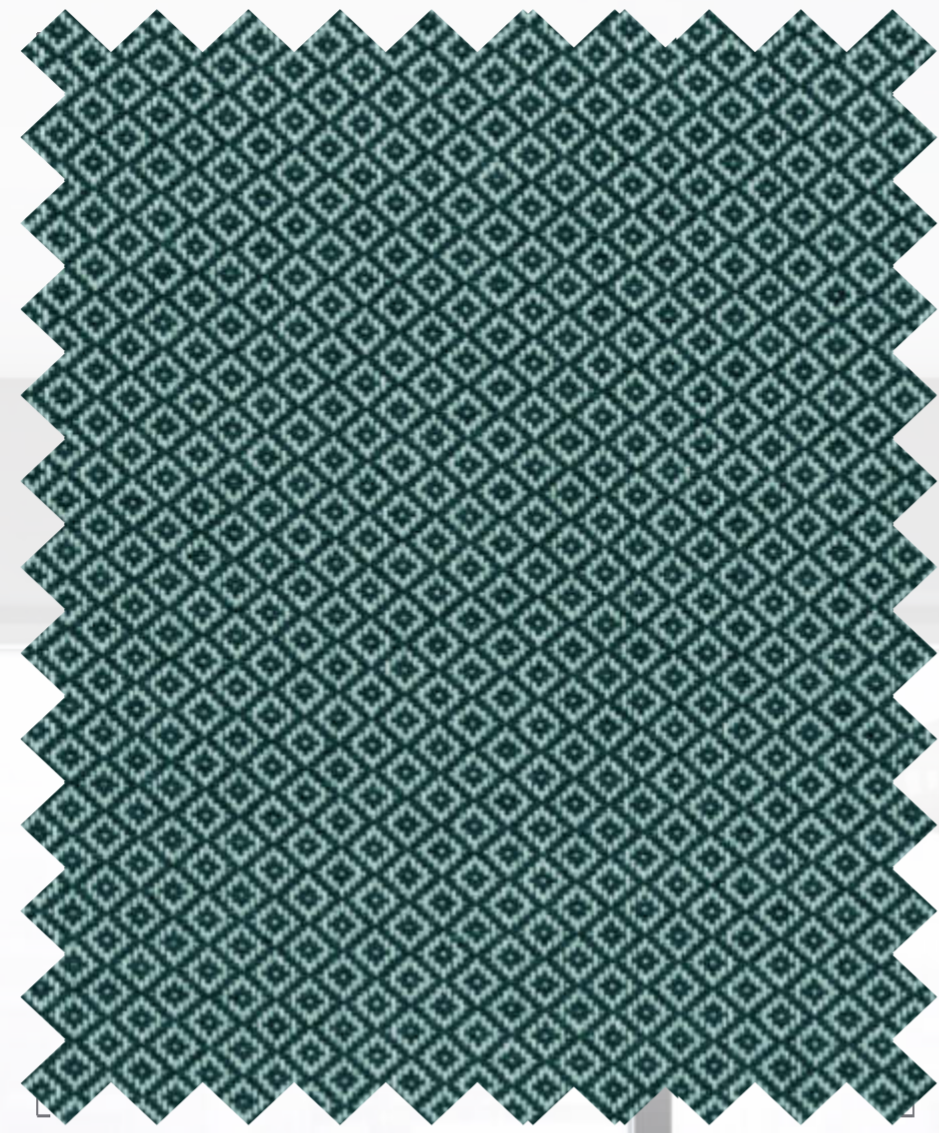
ATLAS 6   




VIETNAM 5 




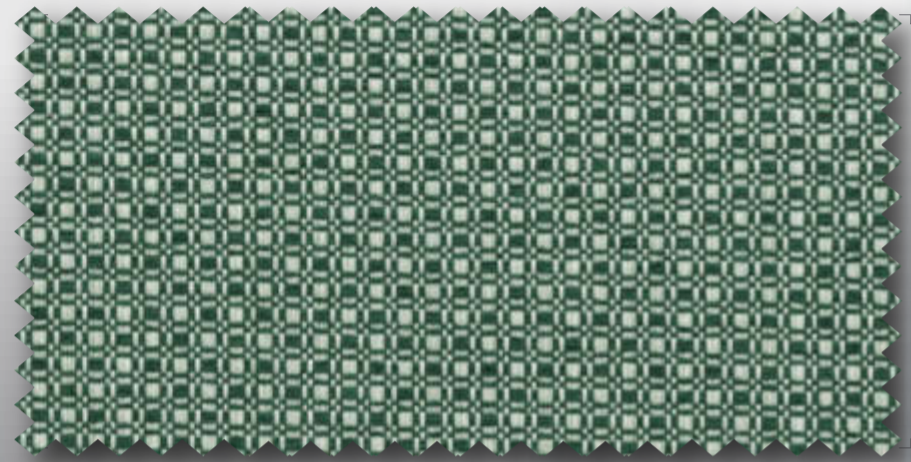
ATLAS 25   




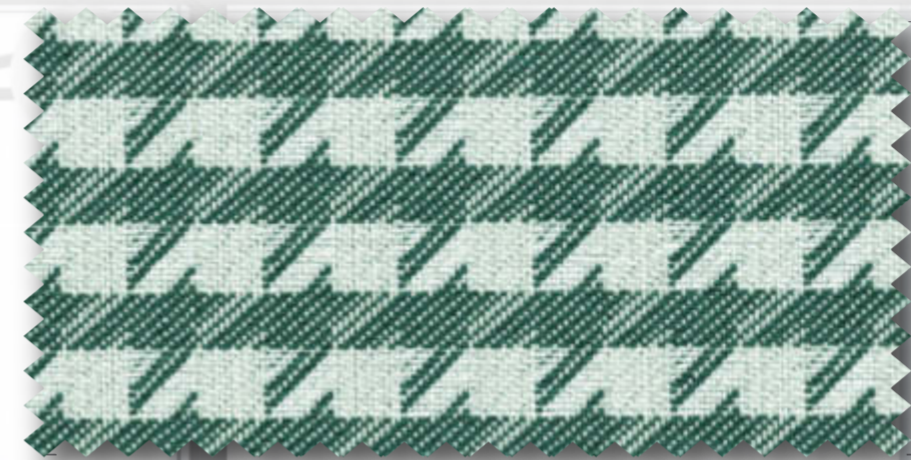
LAOS 12 



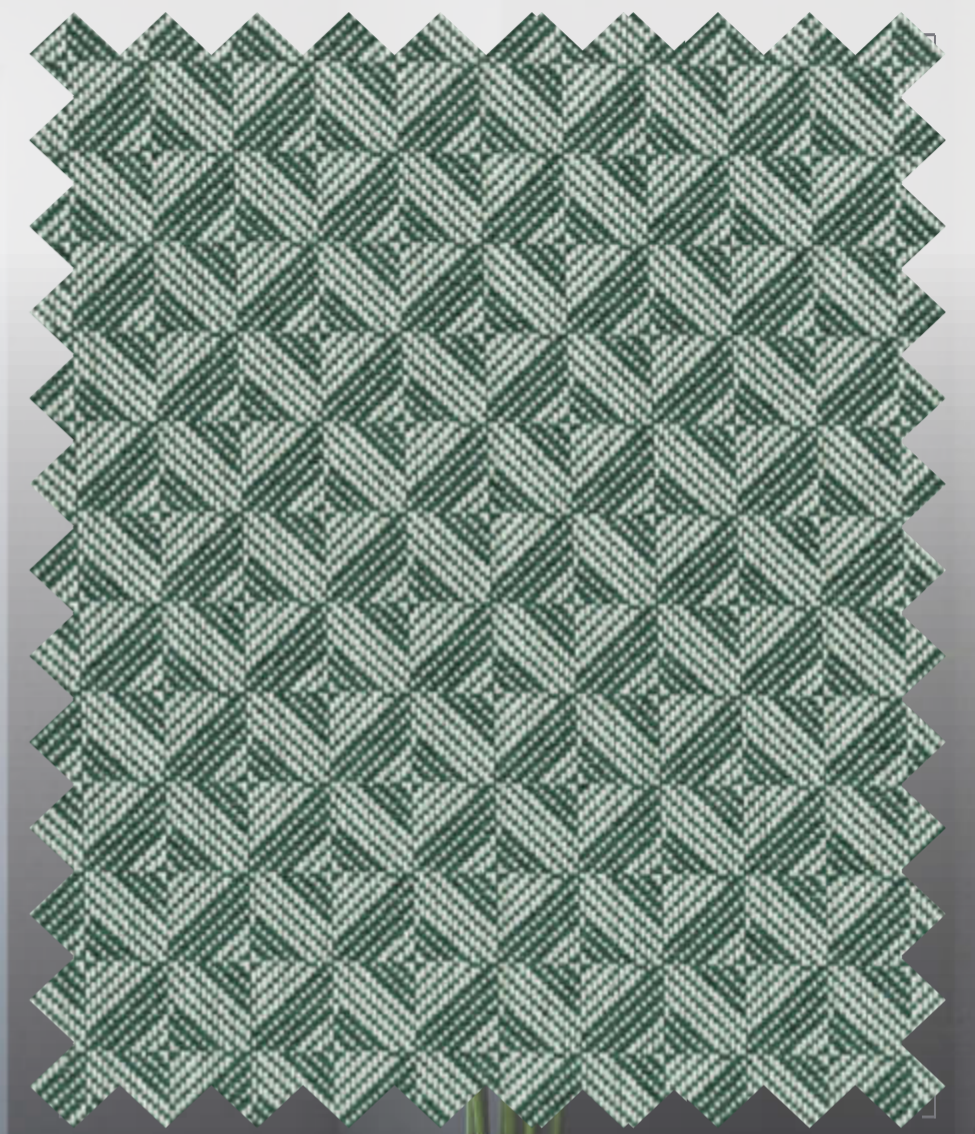
TAIPEI 17 



BUTAN 12 



CAMBOYA 12 




MACAO 12 

FROCA



ATLAS 23   




VIETNAM 12 







LAOS 6 




ATLAS 28   



CAMBOYA 6 





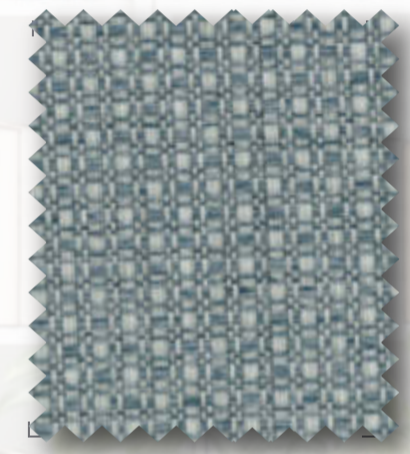
MACAO 6 



ATLAS 27   





YACARTA 17  



BUTAN 6 



YACARTA 19  



TAIPEI 15 



TAIPEI 13 



VIETNAM 6 

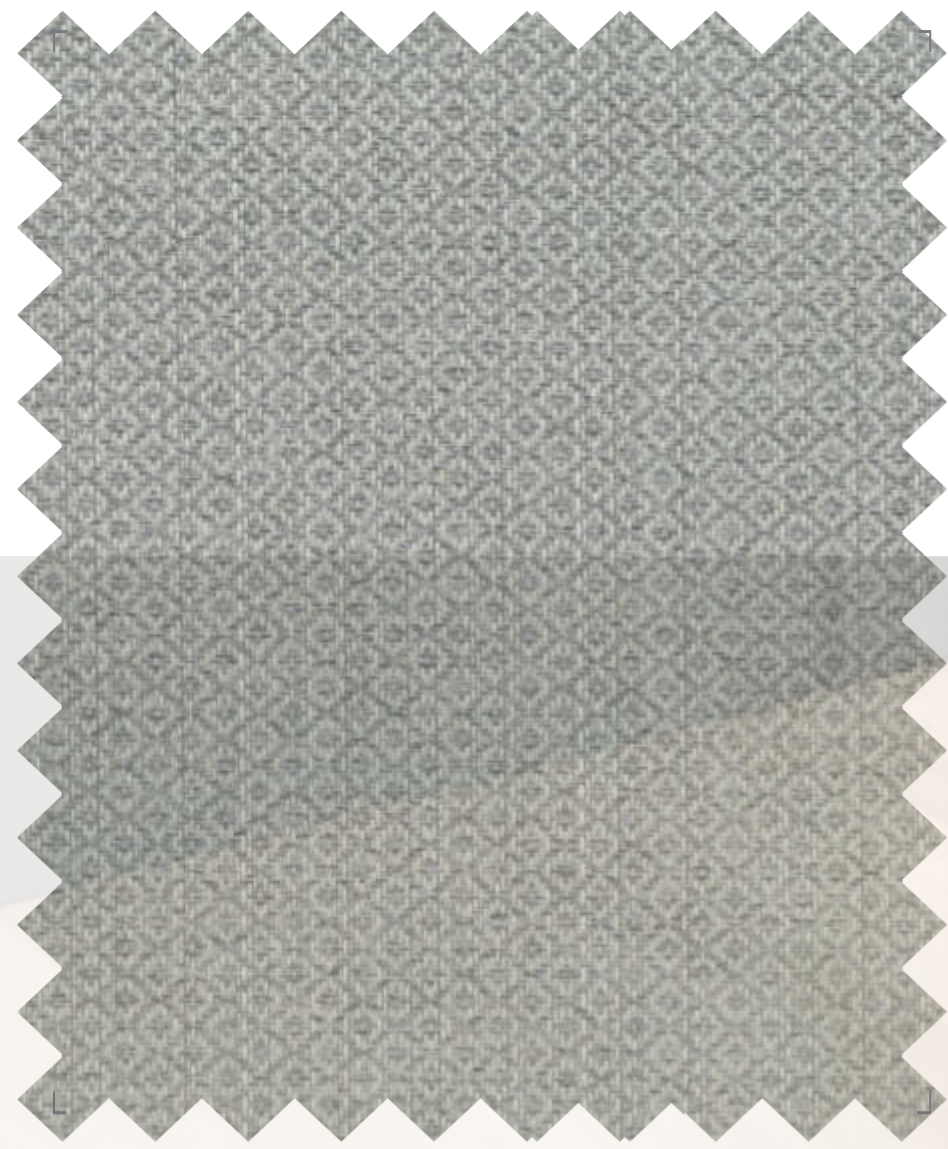
**FROCA**




ATLAS 5   



TAIPEI 16 

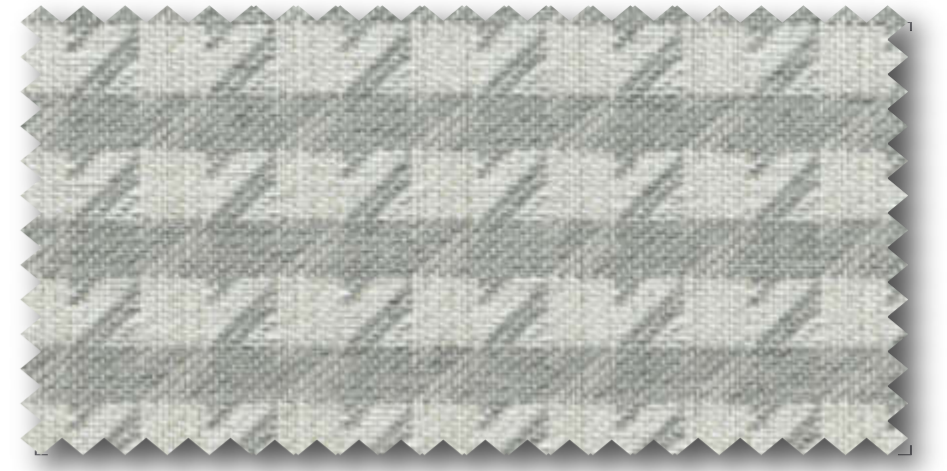


LAOS 4 





MACAO 4 

FROCA




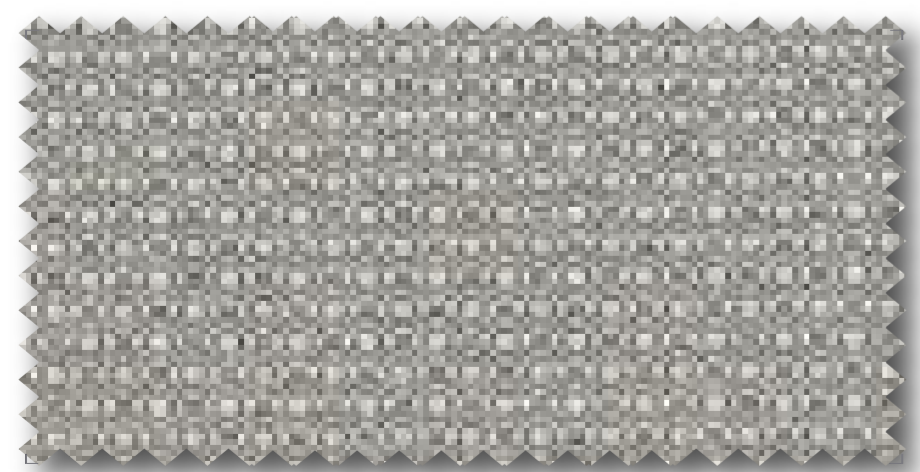
CAMBOYA 4 



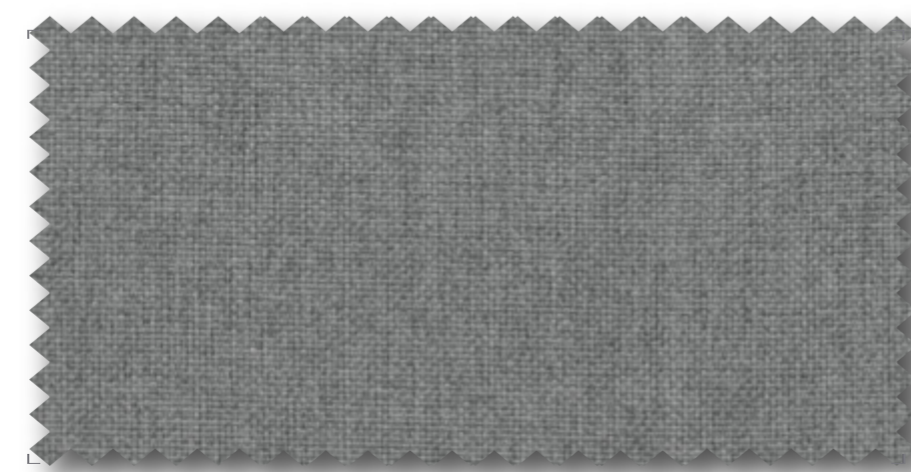
YACARTA 6  



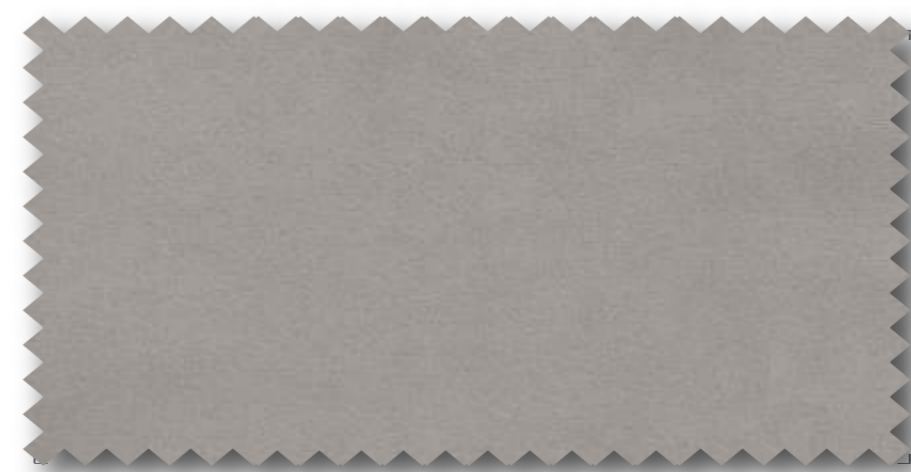
VIETNAM 4 



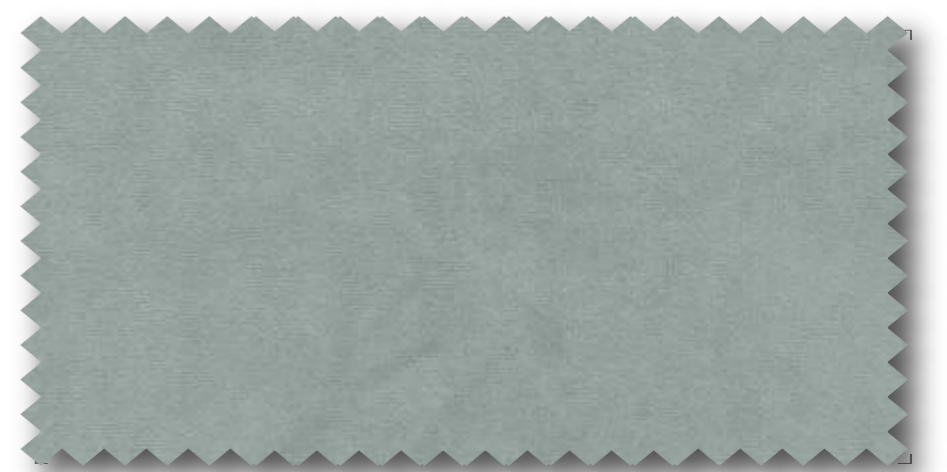
BUTAN 4 



TAIPEI 3 



ATLAS 4   



ATLAS 3   






ATLAS 2  



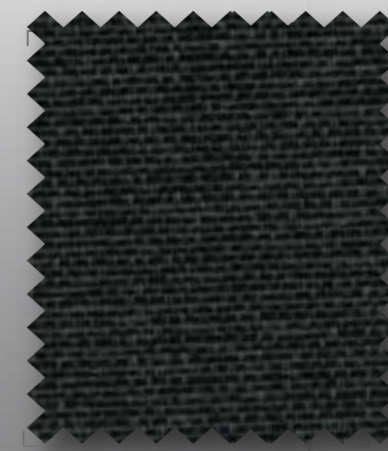
ATLAS 1  





MACAO 2 



ATLAS 30  




YACARTA 1  



VIETNAM 1 





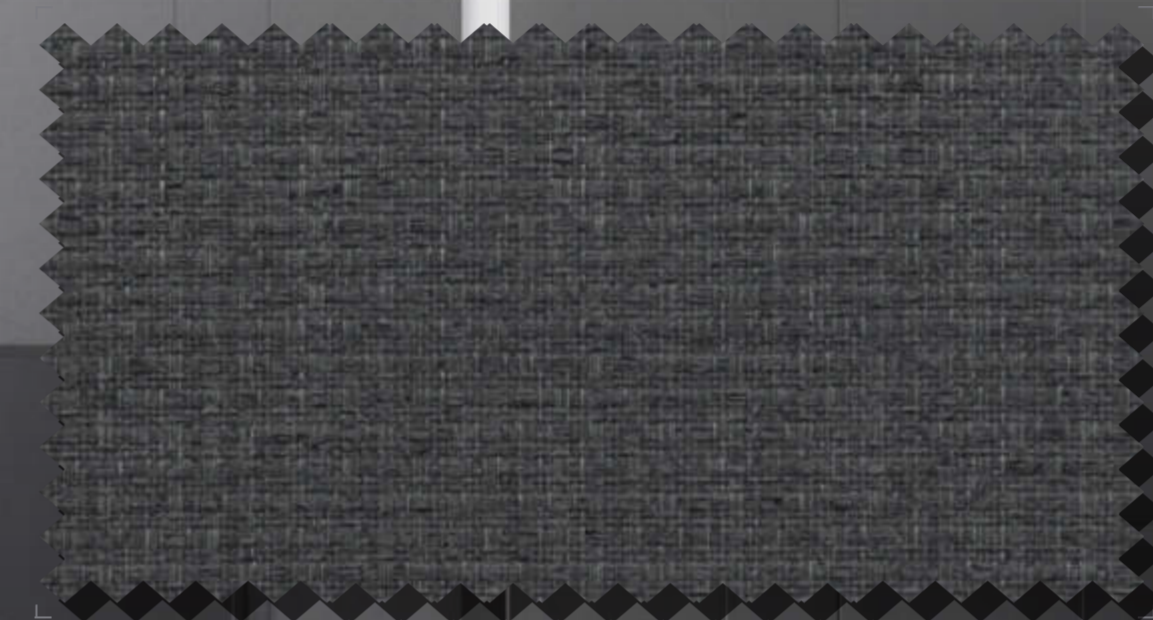
CAMBOYA 1 




VIETNAM 2 



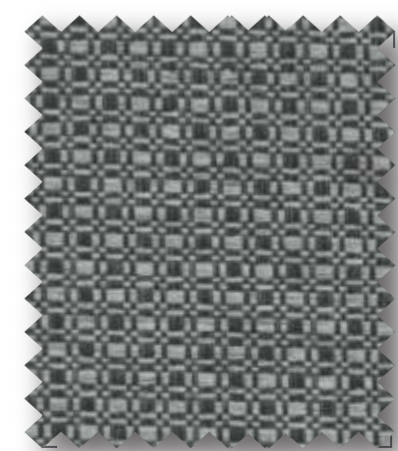
YACARTA 2  



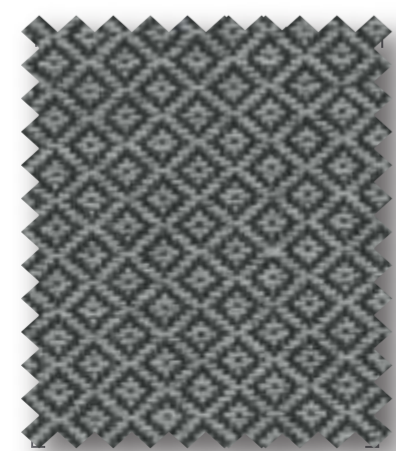
BUTAN 1 



TAIPEI 1 



BUTAN 2 



LAOS 2 



TAIPEI 2 

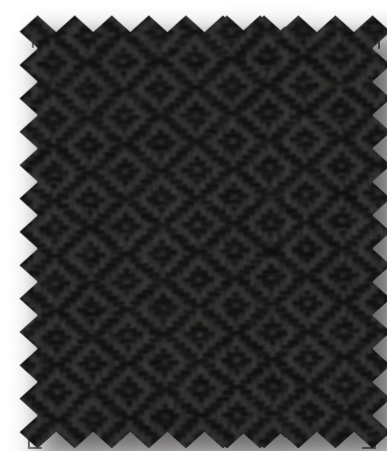


CAMBOYA 2 

**FROCA**



MACAO 1 



LAOS 1 



## Butan-Laos-Camboya-Vietnam-Macao

ECO COLLECTION



### ESPECIFICACIONES TÉCNICAS / TECHNICAL SPECIFICATIONS / SPÉCIFICATIONS TECHNIQUES

Composición / Composition: 100% PES.REC

Ancho / Width / Largeur: 140 cms.

Peso / Weight / Poids: Camboya: 375 gr/m<sup>2</sup>-525 gr/ml / Laos - Vietnam - Macao - Butan 300 gr/m<sup>2</sup> - 420 gr/ml



Deslizamiento de las costuras / Seam slippage / Résistance des coutures		
Urdimbre / Warp / Châine:	3.8 mm	ISO 13936-2:2004
Trama / Weft / Trame:	4.4 mm	ISO 13936-2:2004
Resistencia a la abrasión / Abrasion resistance / Résistance à l'abrasion:		
Ciclos / Cycles / Cycles:	>25.000	ISO 12947-2:2016
Solidez de los colores a la luz		
Colour fastness to light / Résistance à la lumière	5	ISO 105-B02 :2014
Solidez a la limpieza en seco		
Rubbing solvents / Résistance au nettoyage à sec	5	ISO 105 -D01:2010
Solidez de los colores al lavado:		
Rubbing fastness in humid state / Résistance au nettoyage	5	ISO 105-X12:2016
Resistencia al pilling :		
Pilling resistance / Résistance au pilling :	4-5	ISO12945-1:2000



## Atlas

ECO COLLECTION

### ESPECIFICACIONES TÉCNICAS / TECHNICAL SPECIFICATIONS / SPÉCIFICATIONS TECHNIQUES

Composición / Composition: 100% PES.REC ( H2Oh)

Ancho / Width / Largeur: 140 cms.

Peso / Weight / Poids: 350 gr/m<sup>2</sup>- 490 gr/ml



Resistencia de las costuras / Seam strength/ Résistance des coutures		
Urdimbre / Warp / Châine:	601 N	ISO 13935-2:2014
Trama / Weft / Trame:	661 N	ISO 13935-2:2014
Resistencia a la tracción / Tensile strength / Résistance à la traction		
Urdimbre / Warp / Châine:	680 N	ISO 13937-2:2014
Trama / Weft / Trame:	760 N	ISO 13937-2:2014
Resistencia a la abrasión / Abrasion resistance / Résistance à l'abrasion:		
Ciclos / Cycles / Cycles:	>30.000	ISO 12947-2:2016
Solidez de los colores a la luz		
Colour fastness to light / Résistance à la lumière	5	ISO 105-B02_2014
Solidez a la limpieza en seco		
Rubbing solvents / Résistance au nettoyage à sec	4-5	ISO 105 -D01:2014
Solidez de los colores al lavado		
Rubbing fastness in humid state / Résistance au nettoyage	4-5	ISO 105-X12:2016
Resistencia al pilling		
Pilling resistance / Résistance au pilling	4-5	ISO12945-1:2000
Resistencia a los arañazos		
Snagging Resistance / Résistance aux griffures	4-5	BS: 8479:2008

## Yakarta

ECO COLLECTION

### ESPECIFICACIONES TÉCNICAS / TECHNICAL SPECIFICATIONS / SPÉCIFICATIONS TECHNIQUES

Composición / Composition: 100% PES.REC

Ancho / Width / Largeur: 140 cms.

Peso / Weight / Poids: 300 gr/m<sup>2</sup>- 420 gr/ml



Deslizamiento de las costuras / Seam slippage / Résistance des coutures		
Urdimbre / Warp / Châine:	3.8 mm	ISO 13936-2:2004
Trama / Weft / Trame:	4.4 mm	ISO 13936-2:2004
Resistencia a la abrasión / Abrasion resistance / Résistance à l'abrasion:		
Ciclos / Cycles / Cycles:	>25.000	ISO 12947-2:2016
Solidez de los colores a la luz		
Colour fastness to light / Résistance à la lumière	5	ISO 105-B02_2014
Solidez a la limpieza en seco		
Rubbing solvents / Résistance au nettoyage à sec	5	SO 105 -D01:2010
Solidez de los colores al lavado:		
Rubbing fastness in humid state / Résistance au nettoyage	5	ISO 105-X12:2016
Resistencia al pilling :		
Pilling resistance / Résistance au pilling	4-5	ISO12945-1:2000

## Taipei

ECO COLLECTION

### ESPECIFICACIONES TÉCNICAS / TECHNICAL SPECIFICATIONS / SPÉCIFICATIONS TECHNIQUES

Composición / Composition: 100% PES.REC

Ancho / Width / Largeur: 140 cms.

Peso / Weight / Poids: 420 gr/m<sup>2</sup>- 588 gr/ml



Deslizamiento de las costuras / Seam slippage / Résistance des coutures		
Urdimbre / Warp / Châine:	3.8 mm	ISO 13936-2:2004
Trama / Weft / Trame:	4.4 mm	ISO 13936-2:2004
Resistencia a la abrasión / Abrasion resistance / Résistance à l'abrasion:		
Ciclos / Cycles / Cycles:	>25.000	ISO 12947-2:2016
Solidez de los colores a la luz		
Colour fastness to light / Résistance à la lumière	5	ISO 105-B02_2014
Solidez a la limpieza en seco		
Rubbing solvents / Résistance au nettoyage à sec	5	ISO 105 -D01:2010
Solidez de los colores al lavado:		
Rubbing fastness in humid state / Résistance au nettoyage	5	ISO 105-X12:2016
Resistencia al pilling :		
Pilling resistance / Résistance au pilling	4-5	ISO12945-1:2000

### INSTRUCCIONES DE LAVADO / WASHING INSTRUCTIONS / INSTRUCTIONS DE LAVAGE



Lavado a máquina, máximo a 30° C con detergentes neutros.  
Washing machine, maximum 30° C with neutral detergents.  
Lavage à un maximum de 30° C avec un détergent neutre.



Planchar por la cara posterior, máx., 110°.  
Iron only the rear side, at a maximum of 110°.  
Repasser par la facede derrière e, 110° au maximum.



Puede lavarse en seco.  
It can be dry cleaned.  
Il peut être nettoyé à sec.



Evitar secar al sol.  
Avoid drying in the sun.  
Eviter sécher au soleil.



No usar lejía.  
Do not use bleach.  
Ne pas utiliser eau de Javel.



No escurrir, retorcer o centrifugar.  
Do not wring, no centrifugate.



No secar en secadora.  
Do not tumble dry.  
Ne pas sécher en machine.

# FROCA



Certificated by AITEX  
Certificate N. 2020TE0116



**FROCA, S.L.**

Certificate Number: 2020TE0116

Avda. Villena s/n - Apdo.12  
03410 Biar (Alicante), Spain



# f FROCA



## Eco COLLECTION

Todos los años, 25 de las 80 millones de toneladas de plástico producidas acaban en los océanos y ambientes naturales, poniendo en peligro la flora y la fauna de nuestro planeta.

Reducir los desechos es una solución, pero eso no hará desaparecer los ingentes residuos de plástico ya existentes. Esto es moralmente inaceptable y por lo tanto, Froca se ha concienciado para abordar y contribuir a la solución de este problema.

Estamos orgullosos de lanzar nuestra nueva Green Line. En lugar de usar combustibles fósiles, reducimos los desechos de plástico convirtiéndolos en una serie de elegantes, sencillas y coordinadas telas con una paleta de más de 50 colores.

Juntos contribuimos a un mundo mejor!

